



0150

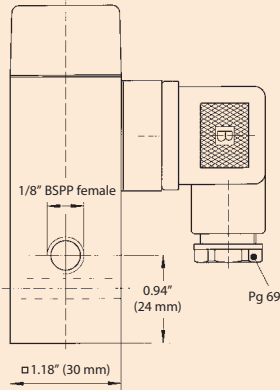
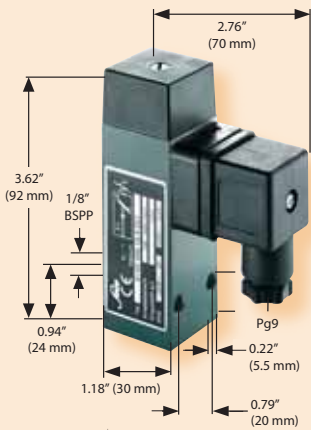
Vacuum switch 250 V

With built-in Snap action micro-switch

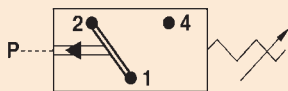
Aluminum body
 Max. voltage 250 V
 Overpressure safe to 290 psi¹⁾
 Differential ca. 1.5" – 3 Hg" (non-adjustable)

• See page 7 for electrical properties

With female thread



• Also available with switching point preset in our factory.



• For further technical data, see page 46

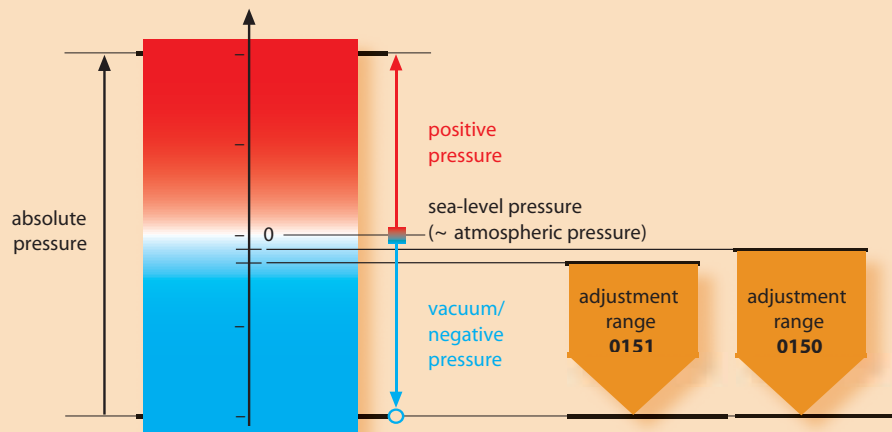
0150 Vacuum switch

Adjustment range in. Hg	Tolerance in. Hg (at room temperature)	Thread	Order number	P _{max.} in psi
3" – 29"	± 1.5"	1/8" BSPP female	0150 456 15 4 001	290 ¹⁾

Diaphragm/seal material

ECO:	Air, oils, greases, fuels etc.	=	4
Temperature stability:	-22 °F – +248 °F (-30 °C – +120 °C)		

Comparison absolute pressure / relative pressure



¹⁾ Static pressure, dynamic pressures should be 30 to 50% lower. These values refer to the hydraulic or pneumatic part of the pressure switch.

Degree of protection IP65

The type approval does not apply without restriction to all environmental conditions. It is the responsibility of the user to check whether the connection complies with regulations other than those stated, and whether it can be used for special applications which could not be foreseen by us in advance.