

0340/0341

Diaphragm/piston pressure switches 250 V

ATEX CE

II 3D IP65 T90°C (dust-protected)

Zinc-plated steel body

With snap action switch

Max. voltage 250 V

Overpressure safe to **4350 / 8700** psi¹⁾



0340 Diaphragm pressure switches

Adjustment range in psi	Tolerance in psi (at room temperature)	Thread	Order number	p _{max.} in psi
4.35 – 21.75	± 2.9	1/4" BSPP	0340 457 03 003	4350 ¹⁾
14.5 – 145	± 7.25 – 14.5		0340 458 03 006	
145 – 290	± 14.5		0340 459 03 009	
290 – 725	± 29.0		0340 461 03 012	

0341 Piston pressure switches

Adjustment range in psi	Tolerance in psi (at room temperature)	Thread	Order number	p _{max.} in psi
725 – 2175	± 72.5	1/4" BSPP	0341 460 03 003	8700 ¹⁾

Order number
Add figure for diaphragm/seal material

034X XXX XX X XXX

NBR (BunaN)	Hydraulic / machine oil, turpentine, heating oil, air etc.	=	1
EPDM	Hydrogen, acetylene, ozone, brake fluid etc.	=	2
FKM	Hydraulic fluids (HFA, HFB, HFC, HFD), petrol/gasoline etc.	=	3
See page 42 for temperature ranges of diaphragm / seal materials			

Warning!

When using with oxygen, the relevant accident-prevention regulations must be observed. In addition, we recommend that a maximum operating pressure of 145 psi is not exceeded.

Piston-type pressure switches are only to a limited extent suitable for use with gases and oxygen. See explanation on page 5.

¹⁾ Static pressure, dynamic pressures should be 30 to 50% lower. These values refer to the hydraulic or pneumatic part of the pressure switch.

Degree of protection IP65

The type approval does not apply without restriction to all environmental conditions. It is the responsibility of the user to check whether the connection complies with regulations other than those stated, and whether it can be used for special applications which could not be foreseen by us in advance.

With male thread

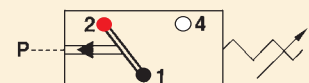


• Also available with switching point preset in our factory.

• Other cable lengths on request.

Contact assignment:

- 1 = black
- 2 = red
- 4 = white



• For further technical data, see page 43