

# 0159

## Diaphragm/piston pressure switches max 250 V

Aluminum body  
With snap action switch and silver contacts  
Overpressure safe to **2900/8700** psi <sup>1)</sup>  
Max. voltage 250 V

• See page 7 for electrical properties



- Switching point steplessly adjustable with switch in operating condition by turning knurled knob

### 0159 Diaphragm pressure switches

Adjustment range in psi	Tolerance in psi (room temperature)	p <sub>max.</sub> in psi	Thread	Order number
2.9 – 29	± 2.9 – 4.35	2900 <sup>1)</sup>	1/4" BSPP female	0159 426 14 001
7.25 – 72.5	± 2.9 – 7.25			0159 427 14 001
14.5 – 145	± 7.25			0159 428 14 001
29 – 290	± 14.5			0159 429 14 001
72.5 – 725	± 43.5			0159 430 14 001
145 – 1450	± 43.5 – 72.5			0159 431 14 001

### 0159 Piston pressure switches

Adjustment range in psi	Tolerance in psi (room temperature)	p <sub>max.</sub> in psi	Thread	Order number
145 – 1450	± 43.5 – 72.5	8700 <sup>1)</sup>	1/4" BSPP female	0159 432 14 001
362.5 – 3625	± 72.5 – 101.5			0159 433 14 001
580 – 5800	± 72.5 – 130.5			0159 434 14 001

**!** Order number  
Add figure for diaphragm/seal material

0159 XXX XX **X** XXX

<b>NBR (BunaN)</b>	Hydraulic / machine oil, turpentine, heating oil, air etc.	=	<b>1</b>
<b>EPDM</b>	Hydrogen, acetylene, ozone, brake fluid etc.	=	<b>2</b>
<b>FKM</b>	Hydraulic fluids (HFA, HFB, HFC, HFD), petrol/gasoline etc.	=	<b>3</b>
<b>See page 38 for temperature ranges of diaphragm / seal materials</b>			

### Warning!

When using with oxygen, the relevant accident-prevention regulations must be observed. In addition, we recommend that a maximum operating pressure of 145 psi is not exceeded.

Piston-type pressure switches are only to a limited extent suitable for use with gases and oxygen. See explanation on page 5.

<sup>1)</sup> Static pressure, dynamic pressures should be 30 to 50% lower. These values refer to the hydraulic or pneumatic part of the pressure switch.

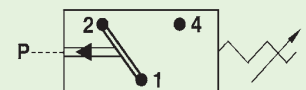
### Degree of protection IP65

The type approval does not apply without restriction to all environmental conditions. It is the responsibility of the user to check whether the connection complies with regulations other than those stated, and whether it can be used for special applications which could not be foreseen by us in advance.

With female thread



- Also available with switching point preset in our factory.



- For further technical data see page 38