

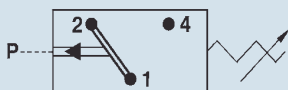
info@suco-tech.com
330-722-1145
www.suco-tech.com



RoHS COMPLIANT



- Also available with switching point preset in our factory.
- Other body materials and connection threads on request.
- Other diaphragm / seal materials on request, e.g. HNBR, silicone (last one for diaphragm type only).



- For further technical data, see page 21.

0184/0185

Diaphragm/piston pressure switches max 250 V

Zinc-plated steel body, with connector plug to DIN EN 175301 (DIN 43650)
With snap action switch and silver contacts
Overpressure safe to **1450/4350/8700** psi ¹⁾
Adjustable differential at factory

- See page 7 for electrical properties

0184 Diaphragm pressure switches

Adjustment range in psi	Tolerance in psi (at room temperature)	Thread	Order number	p max. in psi
4.35 – 21.75	± 2.9	M 10 x 1 taper	0184 457 01 001	1450 ¹⁾
		M 12 x 1.5	0184 457 02 002	
		1/4" BSPP	0184 457 03 003	
14.5 – 145	± 7.25	M 10 x 1 taper	0184 458 01 040	4350 ¹⁾
		M 12 x 1.5	0184 458 02 041	
		1/4" BSPP	0184 458 03 042	
145 – 725	± 43.5	M 10 x 1 taper	0184 459 01 007	4350 ¹⁾
		M 12x1.5	0184 459 02 008	
		1/4" BSPP	0184 459 03 009	
145 – 1450	± 43.5 – 72.5	M 10 x 1 taper	0184 461 01 010	4350 ¹⁾
		M 12 x 1.5	0184 461 02 011	
		1/4" BSPP	0184 461 03 012	

0185 Piston pressure switches

Adjustment range in psi	Tolerance in psi (at room temperature)	Thread	Order number	p max. in psi
725 – 2900	± 72.5	M 10 x 1 taper	0185 460 01 001	8700 ¹⁾
		M 12 x 1.5	0185 460 02 002	
		1/4" BSPP	0185 460 03 003	

Order number **018X** XXX XX **X** XXX
Add figure for diaphragm/seal material

NBR (BunaN)	Hydraulic / machine oil, turpentine, heating oil, air etc.	=	1
EPDM	Hydrogen, acetylene, ozone, brake fluid etc.	=	2
FKM	Hydraulic fluids (HFA, HFB, HFC, HFD), petrol/gasoline etc.	=	3
See page 21 for temperature ranges of diaphragm/seal materials			

Warning!

When using with oxygen, the relevant accident-prevention regulations must be observed. In addition, we recommend that a maximum operating pressure of 145 psi is not exceeded.

¹⁾ Static pressure, dynamic pressures should be 30 to 50% lower. These values refer to the hydraulic or pneumatic part of the pressure switch.

Degree of protection IP65

The type approval does not apply without restriction to all environmental conditions. It is the responsibility of the user to check whether the connection complies with regulations other than those stated, and whether it can be used for special applications which could not be foreseen by us in advance.

